



Bague Roxtec RS Ex avec SLF RS

Bague certifiée Ex, à boulonner, pour câble ou tuyauterie unique.

La bague Roxtec RS Ex avec SLF RS est une solution certifiée pour les zones classées Ex e et Ex tb. Il est composé d'une douille métallique et il est conçu pour un câble ou une tuyauterie. La bague se compose de deux moitiés avec des couches pelables, pour s'adapter à des câbles et des tuyauteries de différentes tailles. Le douille se boulonne à la structure.



- Résistant aux rongeurs
- Installation facile et rapide

Caractéristiques du produit



Coupe-feu



Étanche à l'eau



Étanche au gaz



Certifié ATEX

Structure d'installation



Panneau sandwich



Métal



Plâtre



Béton

Type de fixation



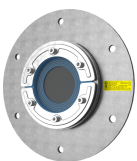
Boulonnage

Classements et certificats

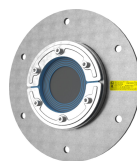
- | Feu | Étanchéité | Supports |
|--|---|---|
| <input checked="" type="checkbox"/> CLASSE A conformément au code FTP IMO 2010 | <input checked="" type="checkbox"/> Gaz: 2,67 bars (catastrophique) | <input checked="" type="checkbox"/> Certifié ATEX |
| <input checked="" type="checkbox"/> Classement E/EI selon EN 13501 | <input checked="" type="checkbox"/> Eau: 4 bars (catastrophique) | |
| <input checked="" type="checkbox"/> Classement F/T selon UL 1479 | | |
| <input checked="" type="checkbox"/> CLASSE H selon IMO 2010 FTP Code + Courbe de charge calorifique HC | | |
| <input checked="" type="checkbox"/> Jetfire selon ISO 22899-1 et OTI 95634 | | |

Éléments d'étanchéité

Éléments d'étanchéité



Kit RS B ES Ex



Kit RS B PE Ex



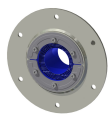
Kit RS B Ex

Pour plus d'informations, veuillez consulter [roxtec.com](https://www.roxtec.com).

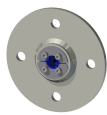


Kits de passage préconfigurés

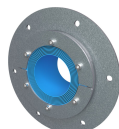
mm/kg



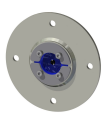
RS 100 B Ex AISI316
WOC/AISI316



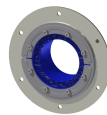
RS 25 B Ex
AISI316/AISI316



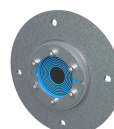
RS 125 B Ex AISI316
WOC/GALV



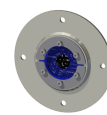
RS 50 B Ex
AISI316/AISI316



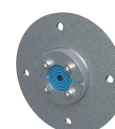
RS 150 B Ex AISI316
WOC/AISI316



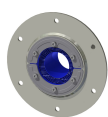
RS 75 B Ex
AISI316/GALV



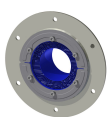
RS 75 B Ex
AISI316/AISI316



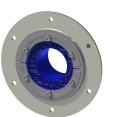
RS 50 B Ex
AISI316/GALV



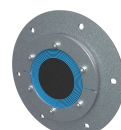
RS 100 B Ex AISI316
WOC/PRIMED



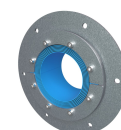
RS 125 B Ex AISI316
WOC/PRIMED



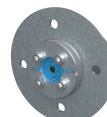
RS 125 B Ex AISI316
WOC/AISI316



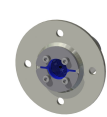
RS 125 B Ex
AISI316/GALV



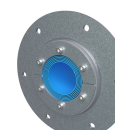
RS 150 B Ex AISI316
WOC/GALV



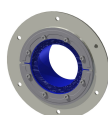
RS 43 B Ex
AISI316/GALV



RS 43 B Ex
AISI316/AISI316



RS 100 B Ex AISI316
WOC/GALV



RS 150 B Ex AISI316
WOC/PRIMED

Titre	Configuration	Dimensions d'ouverture Ø	Poids	N° art.
RS 100 B Ex AISI316 WOC/AISI316	1x (48.0-70.0)	116 - 116	2.7	EXRSB0100102121
RS 25 B Ex AISI316/AISI316	1x (3.6-12.0)		0.48	EXRSB0250002121
RS 125 B Ex AISI316 WOC/GALV		142 - 142	3.6	EXRSB0125102118
RS 50 B Ex AISI316/AISI316	1x (8.0-30.0)	65 - 65	1.4	EXRSB0500002121
RS 150 B Ex AISI316 WOC/AISI316	1x (93.0-119.0)	166 - 166	4.1	EXRSB0150002121
RS 75 B Ex AISI316/GALV		91 - 91	2	EXRSB0750002118
RS 75 B Ex AISI316/AISI316	1x (24.0-54.0)	91 - 91	2.1	EXRSB0750002121
RS 50 B Ex AISI316/GALV		65 - 65	1.4	101918
RS 100 B Ex AISI316 WOC/PRIMED	1x (48.0-70.0)	116 - 116	2.9	EXRSB0100102112
RS 125 B Ex AISI316 WOC/PRIMED	1x (66.0-98.0)	142 - 142	3.4	EXRSB0125102112
RS 125 B Ex AISI316 WOC/AISI316	1x (66.0-98.0)	142 - 142	3.6	EXRSB0125102121
RS 125 B Ex AISI316/GALV		142 - 142	4.3	EXRSB1250002118
RS 125 B Ex AISI316/AISI316		142 - 142	3.9	163616
RS 150 B Ex AISI316 WOC/GALV		166 - 166	4.5	EXRSB0150102118
RS 25 B Ex AISI316/GALV		36 - 36	0.43	EXRSB0250002118
RS 43 B Ex AISI316/GALV		54 - 54	0.9	EXRSB0430002118
RS 43 B Ex AISI316/AISI316	1x (4.0-23.0)	54 - 54	0.9	EXRSB0430002121
RS 100 B Ex AISI316/AISI316		116 - 116	4.4	EXRSB1000002121
RS 100 B Ex AISI316 WOC/GALV		116 - 116	2.9	EXRSB0100102118
RS 100 B Ex AISI316/GALV		116 - 116	3	EXRSB1000002118
RS 150 B Ex AISI316 WOC/PRIMED	1x (93.0-119.0)	166 - 166	4.2	EXRSB0150102112



The product information provided by Roxtec does not release the purchaser of the Roxtec system, or part thereof, from the obligation to independently determine the suitability of the products for the intended process, installation and/or use.

Roxtec gives no guarantee for the Roxtec system or any part thereof and assumes no liability for any loss or damage whatsoever, whether direct, indirect, consequential, loss of profit or otherwise, occurred or caused by the Roxtec systems or installations containing components not manufactured by an authorized manufacturer and/or occurred or caused by the use of the Roxtec system in a manner or for an application other than for which the Roxtec system was designed or intended.

Roxtec expressly excludes any implied warranties of merchantability and fitness for a particular purpose and all other express or implied representations and warranties provided by statute or common law. User determines suitability of the Roxtec system for intended use and assumes all risk and liability in connection therewith. In no event shall Roxtec be liable for indirect, consequential, punitive, special, exemplary or incidental damages or losses.

The Roxtec products are offered and sold in accordance with the conditions of the Roxtec General Terms of Sales. The latest version of the Roxtec General Terms of Sales can be downloaded from <https://www.roxtec.com/en/about-us/about-roxtec/general-terms-of-sales/>

We reserve the right to make changes to the product and technical information without further notice. Any errors in print or entry are no claims for indemnity. The content of this publication is the property of Roxtec International AB and is protected by copyright.

This document was generated on: 2024-04-23